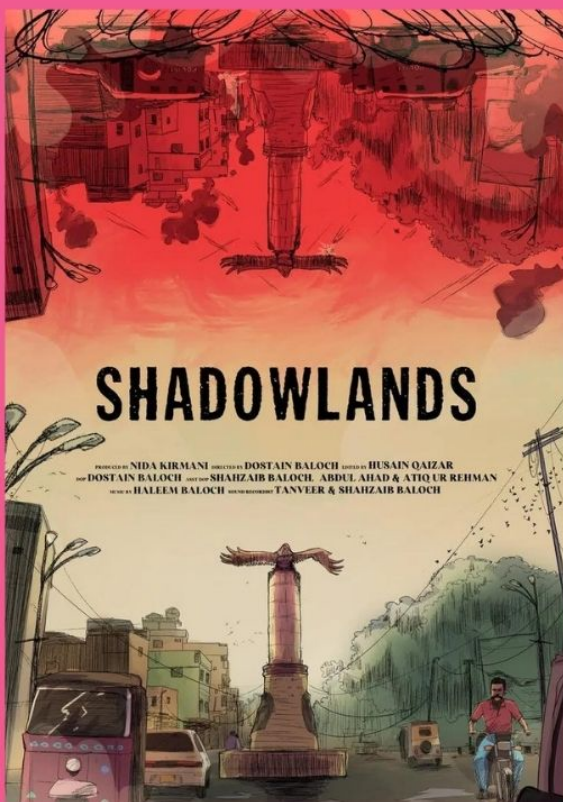




We warmly invite you to a  
BERSAS Screening  
July 12, 2024 at 2:00 pm  
2249A at Unter den Linden 6



## Film Screening of "Shadowlands" and discussion with producer Nida Kirmani



*One of the oldest settlements in Karachi, Lyari has been the site on-going violence between political parties, criminal gangs and law enforcement agencies since the early 2000s. Because of this, Lyari has been labelled as one of several 'no-go areas' in the city. However, residents of Lyari tell a different story, referring to this area fondly as 'Karachi ki maan' or the mother of Karachi.*

*While the conflict has gradually subsided since a state-led Operation was launched in 2013, this came with its own violence, with many residents losing family members to extrajudicial killings ('encounters'). Many others are still in prison for alleged involvement in the gangs.*

*Shadowlands which was supported by the Education, Justice and Memory Network (EdJAM), follows two residents of Lyari, Amna Baloch and Nawaz Laasi, both of whom have lost family members to gang violence and police encounters. Through telling their stories, Shadowlands sheds light on the on-going ramifications of violence and questions whether peace has truly been achieved for the people of Lyari.*

Dr. Nida Kirmani is Associate Professor of Sociology in the Mushtaq Ahmad Gurmani School of Humanities and Social Sciences at the Lahore University of Management Sciences, and coordinator of the Gender and Sexuality Studies Minor. Prof. Kirmani is a feminist public intellectual who has published widely on issues related to gender, Islam, women's movements, development, and urban studies in India and Pakistan. She completed her Ph.D. in 2007 from the University of Manchester in Sociology. Her book, *Questioning 'the Muslim Woman': Identity and Insecurity in an Urban Indian Locality*, was published in 2013 by Routledge.



Scan the QR code for more information  
about BERSAS & our upcoming events

To register for the event, please write to:  
johannes.heyman@hu-berlin.de



More about Shadowlands